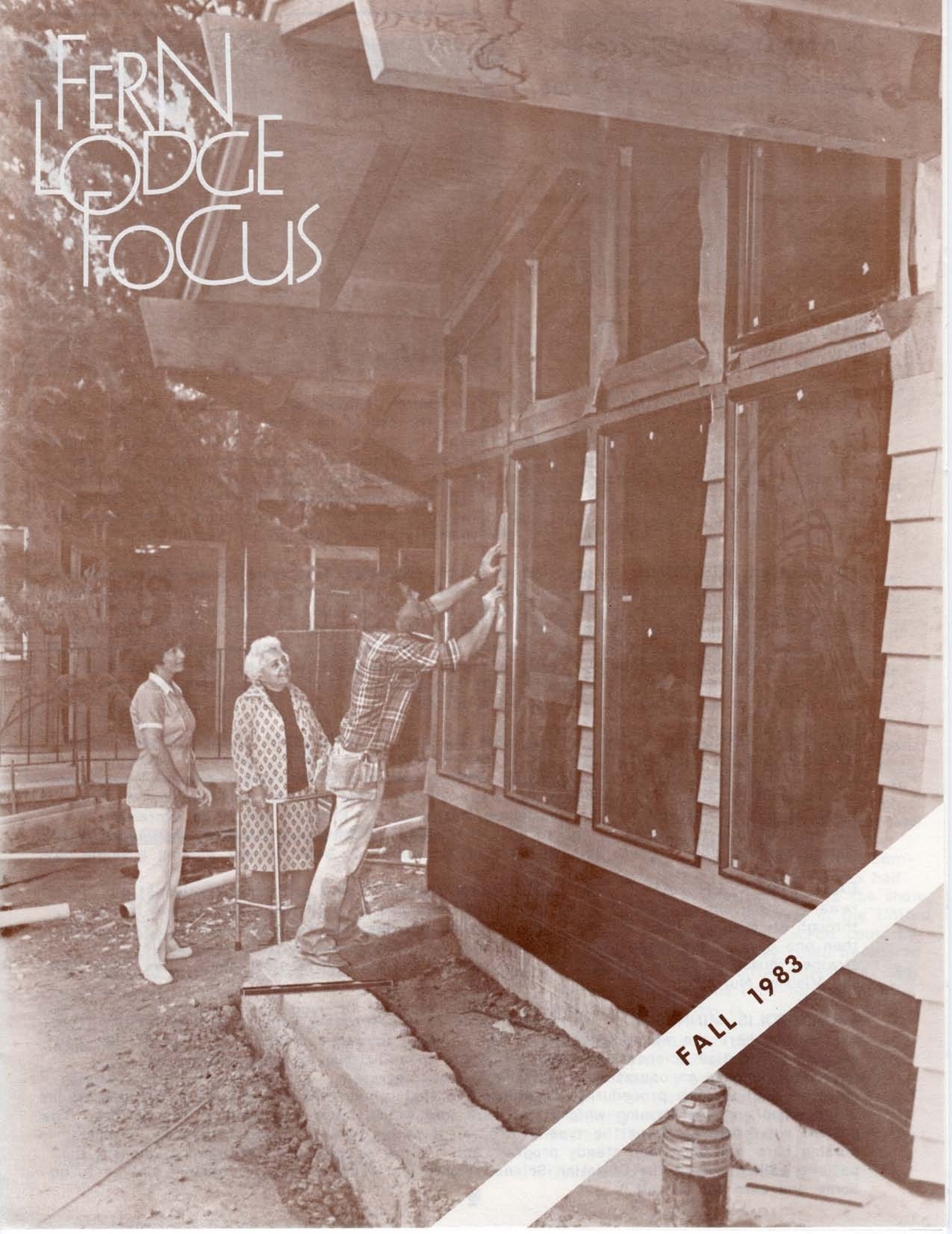


FERN LODGE FOCUS



FALL 1983

ANNUAL MEETING

Healings from Points on a Globe

"NURSING WORLD WIDE CHRISTIAN HEALING," the theme of our Annual Meeting last May, proved to be a stimulating session. Nursing facilities, and Visiting Nurse services around the world, plus private duty nurses working outside the United States shared healings which included the support of Christian Science nurses. A panel read excerpts of the healings submitted from points on the globe illustrated by colored flags on a large world map. We will share a few of these healings with you:



HANNOVER, WEST GERMANY: "When a dear church member who lived alone, already under care of a Christian Science nurse, fell and lost the use of her arm, the situation looked grim. For her to have to be in a hospital would be devastating. The Visiting Nurse contacted the care committee at church and church members rallied round, eager to help. One kept in constant touch with the Nurse and a schedule was worked out. The patient could in her own home be gently encouraged and uplifted through the 'demonstrable knowledge of Christian Science practice'. Her practitioner visited regularly and the Nurse attended to the dressings and personal care. In March this dear one radiantly walked into church healed."

MILWAUKEE, WISCONSIN: A practitioner wrote, "The baby was having convulsions and had shown no response to treatment, and when I felt my own thought being pulled into the fear, I knew we needed a nurse, someone skilled in being unimpressed by mortal mind's worst dramas. From the time I called I felt the beauty of the office of nurse. When the nurse arrived the spasms had stopped and the baby was fully conscious and had eaten. I had never felt before the power behind the office of nurse as clearly as I did that day. After the nurse left, the family slept for several hours and awoke to find the baby restored to her joy. With love from a practitioner who needed a nurse!"

MEDFORD, OREGON: "I was using a table saw and in my haste to finish a project I neglected to get my hand out of the way of the blades. As I pushed a piece of wood over them, I cut off the tip of my finger. My wife called a practitioner who began prayerful treatment at once and recommended we call a Christian Science nurse to clean and bandage the finger. I will always be grateful for the gentleness, patience, and kindness the nurse expressed. During this time I continually worked with the Scientific Statement of Being in Science and Health by Mrs. Eddy. I was able to carry on my duties at work without missing a single day."

EAST SUSSEX, ENGLAND: The Visiting Nurse shared, "There are many challenges but the rewards are great in reassuring the dear ones there are no problems which cannot be met through an absolute trust in God. The following are healings witnessed: cracked ribs, more than one case of ulcerated legs, diarrhea, skin rash, progressive activity from belief of strained muscles. Many patients are able to care for themselves after one or two visits from the Visiting Nurse."

MINNEAPOLIS, MINNESOTA: "A patient came to our Christian Science nursing facility from a hospital where she was taken after a fall. X-rays showed a fracture of the hip. She had requested Christian Science treatment and to go to a Christian Science sanatorium. The physician declared an operation to set the hip was necessary, predicting the patient would not walk without this procedure; in addition to that, pneumonia was setting in and the threat of an embolism was forming which they were told would cause the death of the patient. The patient was adamant about the type of treatment to be given---Christian Science. Proper nursing care was given and steady progress and healing were present. Within two months the patient walked out of the Christian Science sanatorium using a cane for balance only---to go home and care for herself."

Annual Meeting Talk

Mr. Ron Ballard, C.S.B. followed the panel, using powerful healing illustrations to illuminate his talk based on the following citations from the writings of Mary Baker Eddy:

Mis 365:10-12; CSJ June 1936, p.156; Mis 370:12

Christian Healing--What is it?

Call to higher duty

Hea 1:7-9

Based on divine Principle, Love

Hea 3:21

Hea 4:24-26

S&H 390:7-9

S&H 13:20-24

Takes place in thought

Hea 6:15-18,22

S&H 521:5

11:23-28

469:13-20 (Mind)

S&H 422:22-24 (next page)

UN 54:3-16

120:7-29

Hea 13:22-24

Hea 9:5-14

Mis 59:26

S&H 348:18

Hea 10:5-8

396:14

S&H 395:6-10

87:19

419:4

377:16-7

Uses only spiritual means

Hea 15:2-6

Hea 7:6-10

S&H 371:7-9

S&H 143:5-8

479:9-10

232:19-22

277:26-27

167:26

411:21-24

Christian Healing--How can we nurse it worldwide?

S&H 241:17

S&H 559:8-10

452:18-20

My 147:28-30

453:14-15

Christian Healing--Why should we cherish it?

Statements by Mary Baker Eddy, Archival Records, reprinted in Mary Baker Eddy, The Years of Authority, by Robert Peel, pp. 226; 456 n19

S&H 146:26

S&H 146:2

Hea 3:10-14

Mis 206:11-6

S&H 328:20-4



Churches in all three of the communities I contacted scheduled meetings. I shared the slides and information about Christian Science nursing in Berlin and Hannover, West Germany and Amsterdam, the Netherlands. The eager response which greeted the show made my trip worthwhile! Each meeting was inspiring, and the questions asked showed an understanding of and commitment to Christian Science nursing. About 190 Christian Scientists participated in the meetings, and their gratitude for our sharing was sincere.

I met with several dedicated church members who are working to found a facility for Christian Scientists and a Nurses Training School in Germany. They have formed a Board of Directors, and their love and firm resolve are certain to bring success to their venture.

After returning home, I learned that Mr. Albert Hooning, Administrator of Arden Wood Benevolent Association, was planning a trip to Switzerland, so the slide program returned to Europe with him, and he shared it in Zurich. The response to the meeting Mr. Hooning conducted was as enthusiastic as that which greeted me. The audience included the Committee on Publication for Germany, who had taken a 5 hour train ride to come to the show, and who later called Mr. Hooning in the United States to ask if the slides and script could be sent back to Germany so they could be shared with other interested Christian Scientists. So the show left again, this time for Frankfurt, Germany, where it now is.

I am so grateful for the friends of Fern Lodge whose first enthusiastic support of the slide show made it possible for information about Christian Science nursing to be shared more broadly with so many interested church members. **Thanks to you all!**

George Strong, Administrator

Nursing Slide Show Travels to Europe

Last year while vacationing, the Visiting Nurse from Berlin, Germany, Mrs. Charlotte Madison, visited Fern Lodge. Her enthusiasm for Christian Science nursing was inspiring, and she said there is a lot of interest in nursing among Christian Scientists in Europe. When Mrs. Madison heard about our Nursing information slide show she mentioned that churches in Germany would be eager to see it. This summer I traveled to Poland to visit relatives, and on the way passed through the Netherlands and Germany. I wrote in advance to the churches in the cities through which I would travel, saying that I would be happy to share the show with them.

"Through wisdom is an house builded; and



Fern Lodge, Inc.

18451 Madison Avenue, Castro Valley, Ca. 94546-1691

THANKSGIVING

Dear Friends:

You have seen the drawings of our remodeling plans in our newsletters. It has been a delightfully active summer and his crew working faithfully to complete this project. At Fern Lodge regularly, the progress has been full of joy. Our guests have supported the idea with joyous patience.

How are we doing financially? Our hearts overflow with gratitude of over \$33,000 since our April Focus. While still in the process we know that your continuing loving support will be a blessing but also to "owe no man anything."

Now, very close on the heels of this year's demonstration of a wonderful opportunity to grow! Recently Laurel in San Mateo, has made the decision to close and another two Christian Science nursing facilities in the area. Laurel Haven has said that if Fern Lodge can provide capacity for long-term care in our nursing home, we will be free from the sale of their building.

Laurel Haven has found as we have that there is a quiet setting with pleasant view and opportunities for growth at Fern Lodge. Many of these same Christian Science funds which pay only a portion of the cost. Our expansion idea will take your continued financial support. You are informed of our plans as we see them unfold. We must!

We received \$1,183 in this last year from the deacons of the United Way. We are pleased that Fern Lodge is growing in this way.

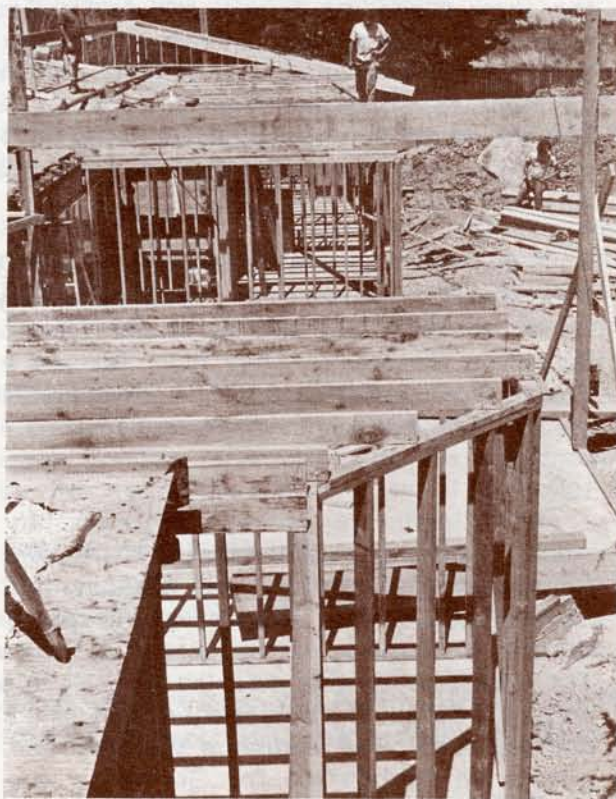
We are thankful,

Jane S. Schweitzer

Jane S. Schweitzer, President
Board of Directors

President: Jane Schweitzer, Oakland; Vice President: Raymond B. Concord; Treasurer: Betty Dempsey, Castro Valley; Directors: Sybil Frances Griffith, Walnut Creek; Kathryn Grover, Pleasanton; Alan Ronald Macdonald, Oakland; Hazel Wilson, Hayward; Charles Arden Administrator: George Strong, Castro Valley.

A Non-Profit Nursing Facility for Christian Scientists Accredited by The First



and by understanding it is established."

(Proverbs 24:3)

09 415 886-2448

IVING 1983

ns for Hillside House in our last two Focus
summer and fall with our builder James Keven
addition. And for those of us who have been
n to witness, noisy at times, but staff and
ce.

ow with gratitude to you for your contributions
needing \$50,000 to complete this project,
see us through to not only complete the build-

nstration, we have been offered another
Haven, a sanatorium for Christian Scientists
more fully support the healing work at the
ne Bay Area, Arden Wood and Fern Lodge.
vide 12 or 15 more beds than our present
atmosphere, they will help us with the funds

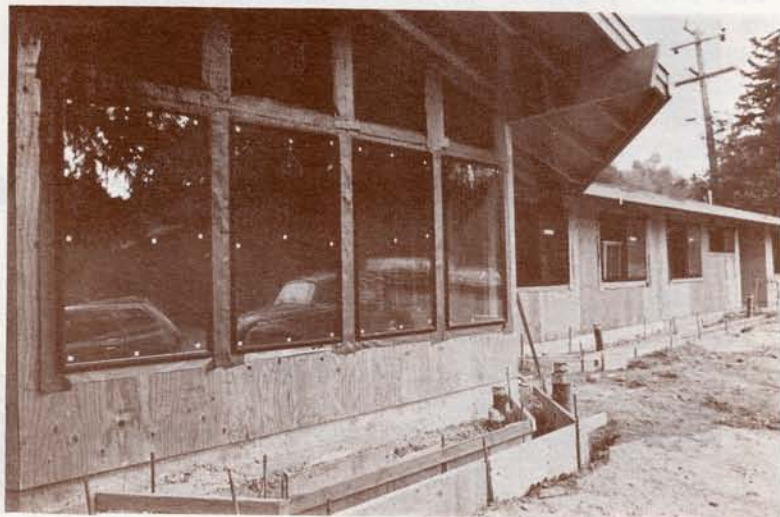
increasing need for long-term nursing in a
to walk outdoors such as we are providing
ientists find it necessary to rely on Medi-
So even with Laurel Haven's help, this
and metaphysical support. We will keep
for yet another building project. Grow

ignated donor option plan of the Bay Area
included. You may wish to contribute in

YOU MAY NEED TO KNOW that your
contribution is tax-deductible because we
are a non-profit tax-exempt nursing facility
under both Federal and State law. Your
entire gift is utilized for improvement
and operation of Fern Lodge, and no por-
tion of your contribution has been or will
be used for fund-raising expenses.

shop, Walnut Creek; Secretary: Druid Farmer,
via Feldman, Castro Valley; Eugene DeBolt, Danville;
Jones, Oakland; Joseph Landisman, Berkeley;
Walnut Creek; Blair Lindsay, Oakland.

Church of Christ, Scientist, Boston, Massachusetts.





Discovery, Fun and Creativity

SUPPORTIVE EXPERIENCES are encouraged at Fern Lodge through regularly scheduled patient activities and special programs.

ARTS AND CRAFTS. Everywhere art work cheers rooms and hallways, evidence of the weekly Arts and Crafts Day. Often volunteers will assist the Volunteer Coordinator and patients with arts and crafts projects. During summer vacation one volunteer brought her five and eight year old sons to help out.

MOVIE DAYS. The smell of popcorn and sound of laughter are regular features. Once a month a volunteer who is a local high school teacher borrows a school projector and shows films from the Alameda County Library. This idea was so popular that we now rent video equipment on Fridays, so patients can see a variety of movies available on video cassettes.

HOLIDAYS. Everyone gets in on this patient activity: barbecues and parties!! In the summer months hamburgers and hotdogs are downed (with relish!) at barbecues held on the front lawn. Each holiday is an occasion for what else? A party! Our holidays and parties are brightened by the generous contribution of seasonal decorations by a Fern Lodge Support Group.

SPECIAL PROGRAMS. Other events include a monthly visit from the Oakland S. P. C. A. with puppies for holding (friends and volunteers are encouraged to bring their small pets to share with patients). Special programs are given throughout the year such as: magic shows, music concerts, dance programs, slide shows, clown acts, and performing dogs.

IF YOU HAVE A TALENT, SHOW, OR TIME TO SPARE, why don't you share it with us? Please contact: Elizabeth Stapler, Volunteer Coordinator at (415) 886-2448.



Two Happy Teams



Housekeeping

Cathy Adeyemi, Clem Bundalian, Jessamel Bundalian
Bryan Mendoza



Kitchen

Ida Ricks, Trinity Sammons, Andrea Lozada



Dorothy Farquhar enjoys her party

A Festive Farewell

A farewell party in October marked the retirement of Dorothy Farquhar, graduate nurse, after a 24 year career in Christian Science nursing. Dorothy entered nurses training in 1959 at the C.S.B.A. in San Francisco graduating in 1962. She then took the position of Head Nurse at Harmony Haven, a Christian Science nursing facility in Berkeley, until its closing in 1969, when she returned to the C.S.B.A. in San Francisco until 1974.

Joining the nursing staff here at Fern Lodge, she served as staff nurse and supervisor until 1978 when she took a year to do Visiting Nurse relief and private duty work in the community. In 1979 she returned to Fern Lodge and has been a fond member of the Fern Lodge staff since. We will miss Dot's humor and love of fun. Amusing guests and staff, she often danced lightly down the halls on her rounds.

Ever active, Dorothy's retirement from nursing does not mean retirement from employment. She goes to give her support as a companion in a private home in Cool, California.

An Adventure-In-Nursing Day "To Go"

In July those on our mailing list living a considerable distance from Fern Lodge received invitations to take part in a full day Adventure-In-Nursing conducted by the Fern Lodge On-Job-Training Instructor to be held at a convenient time and place in their community. We have received interested replies from Sacramento Valley, San Joaquin Valley, Sonoma County, and Santa Cruz County. These adventures will be held early in 1984, so it isn't too late for you to take part.

You will:

1. Hear about the foundation and theory of Christian Science nursing,
2. Learn about the many aspects of care which are included in this church activity,
3. Have a chance to discover precisely what activities are included in the Christian Science nursing profession,
4. Come to understand more about loving your neighbor and mankind.

The instructor, Mrs. Alvarez, will be happy to answer your questions on any aspect of care. If you are interested in an Adventure in your area please contact:

Mrs. Pat Alvarez
Fern Lodge, Inc.
18457 Madison Ave.
Castro Valley, CA 94546
(415) 886-2448



"Healing and Spiritual Integrity"

by Ruanne Gentry, C. S.

Excerpts from an informal discussion with the Fern Lodge Staff
August 23, 1983

"Healing: 'To restore to original purity and integrity' (Webster). We need to protect our sense of spiritual integrity at all times. Putting God first also has to do with loving one's self. Jesus' two commandments were: 'Thou shalt love the Lord thy God with all thy heart, and with all thy soul, and with all thy mind...' and 'Thou shalt love thy neighbor as thyself.' Scientific appreciation of yourself is involved in the first commandment--putting God first, which includes yourself because Principle and Its idea is one. If you love Him and yourself as His reflection, you are really establishing this sense of divine Love, your wholeness.

"It is your thinking that you need to correct. We are always dealing with our own thought. It is what we are thinking that governs our experience. In Christian Science we are healing thought and we have to start with ourselves. Know who you are and heal your thought.

"To be consistent, we need to set aside time for ourselves. Jesus knew the importance of establishing his sense of oneness with the Father. Nothing is more important to your success and to the realization of your spiritual integrity, and you need to protect it. Animal magnetism does not want you to set aside time to do this, so it will try to rob you of that time.

"To lead a balanced life is very important. Don't get so wrapped up in healing work that you forget about enjoying yourself and enjoying life. Protect time for metaphysical work and live normally. Demonstrate normalcy, sense of balance; otherwise it may get a little out of focus. Jesus went to dinner parties and enjoyed his disciples.

"Second commandment: to love and appreciate yourself as a divine idea is very important, 'Love your neighbor as yourself.' Understand yourself and what your neighbor is to you. Think big and include everyone in Love. Measure all against the perfect man. 'Jesus beheld in Science the perfect man,' not a perfect man--that is loving your neighbor as yourself. Appreciate the integrity of every single member. Each individual is essential to this operation and to the cause of spiritual enlightenment and healing, or Christian Science. If we appreciate ourselves we are going to appreciate others. Recognize the dignity of the work no matter what you are doing. There is integrity and dignity in each task, whether in the kitchen, nursing, etc."

Question regarding: How to heal problems when you seem to have little time to pray?

"Discipline thought, 'pray without ceasing', watch your thinking all the time, keep your thinking on the track. While you are doing routine things like driving, washing, etc., you can pray. We all have more time to pray than we realize. Big problems don't require big amounts of time to be healed. Healing is not a question of time. Constant nourishment of our thought processes and metaphysical point of view is important too. Your tasks will then be done with a much greater sense of spiritual joy and dominion. This is what creates the healing atmosphere. We are in the presence of the Christ. The Christ is not a personal thing. Each one of us has it and we can express it."