

Foundation Statement for Christian Science Nursing Issued

Over the past 3 years, the Board of Directors of The Mother Church has been closely examining the foundation on which Christian Science nursing rests. Their goal was to see more clearly the role of Christian Science nursing in the context of the mission of our Church. Last November the Board of The Mother Church sent a report to Christian Science teachers, practitioners, and nurses listed in the Christian Science Journal, to boards and administrators of accredited nursing facilities and visiting nurse services, and to Committees on Publication. This report is titled "The Foundation for Christian Science Nursing." A version of the Foundation statement will be published in an upcoming issue of the Journal to help all church members see more clearly the foundation on which Christian Science nursing rests.

Briefly, this statement traces the activity of nursing from cause to effect. The statement presents four "foundation stones" on which nursing can be built. Beginning with God, the statement acknowledges that nursing involves the expression of God's qualities of nourishing, nurturing, cherishing, supporting — qualities which tenderly express the Motherhood of God. The human activity of nursing is an expression of God's care for His children, and therefore, all of us are able to nurse, to express the mothering, nursing qualities of God, whenever there is a need.

The statement continues in the second stone by acknowledging that all real care must illustrate the fact that God cares for man, always and in all ways. Although there is a sound basis for the human activity of giving nursing care, the responsibility for this care remains with God. Nurses are not responsible for "their" patients, and patients are not dependent on nurses, only on God.

The standard for Christian Science nursing is set by the Church Manual By-Law for the Christian Science Nurse, Article VII, Section 31. This standard is the third stone. The Foundation statement

thoroughly examines the requirements set forth in the By-Law, demonstrating the role of nursing as one of "upholding and supporting the patient's reliance on God for healing." Some of the ideas offered in this analysis reinforce the work we have been doing at Fern Lodge and have written about in recent *Focus* issues. We will continue to share insights gained from our daily nursing.

The fourth stone is the role of the Christian Science nurse in the mission of our Church. Although the Manual provides for the nurse and gives requirements he or she must fulfill, it does not define the role of the nurse or of nursing. This role remains for us to work out for the age in which we live. The Foundation statement thoroughly discusses this role, and in the process furnishes much food for thought. Some of the points given include seeing the nurse as "an expression of ministering Love," and as one rendering "aid and assistance consistent with the theology of Christian Science," and acknowledging "that trust in God's care cannot be misplaced on to the Christian Science nurse, either by the patient or the nurse."

Along with Christian Science nurses and nursing facilities throughout the world, Fern Lodge has been involved with the Church study which gave rise to the Foundation Statement discussed here. We met with Mr. Bruce Davis, the consultant to The Mother Church Board who was asked to conduct the study, and we shared ideas about nursing and support for the work being done. We are grateful for the dedication of the Board of Directors of The Mother Church and for their devotion to this task, and we are very much encouraged by their communication. Only a quick overview of the Foundation statement has been given here. When the statement is printed in the Journal, probably this Spring, a much fuller picture will appear, and we will write more about this exciting topic in future *Focus* issues.

Development Committee Formed

The Board of Directors has established a Development Committee to oversee our current fund-raising drive. The Development Committee will coordinate efforts to raise \$450,000 by July 31st to cover operating and building expenses for this fiscal year and to raise an additional \$2 million over the next two years for our Benevolence Endowment Fund. Chaired by Betty Dempsey, the committee will be exploring both new ways to inform the field of our financial needs at Fern Lodge and new ways for the field to respond.

The Development Committee currently has a nucleus of Fern Lodge staff and supporters and is looking for volunteers who are willing to share their time and talents with Fern Lodge. As presently envisioned, the Committee will consist of from 10 to 15 members, who will generate fund-raising ideas and supervise their implementation, investigate alternate sources of income for Fern Lodge, such as grants from private foundations, and keep the field informed of progress toward our fund-raising goals.

The Development Committee in turn will draw on the services of a much larger Advisory Committee for help in carrying out the details of their plans. Members of the Advisory Committee will share the Development Committee's commitment to seeing Fern Lodge reach its goals, but the scope of their individual activities will be more limited. While the Development Committee will formulate the overall fund-raising strategy, Advisory Committee members will pitch in by carrying out specific tasks or providing needed services in support of that strategy.

If you are interested in serving on either committee, or just want to know how you can help, please call Betty Dempsey at 276-1982.

Fund Raising Update

We are sincerely grateful to our friends at Arden Wood in San Francisco. In response to our request for assistance with informing the field about our Building and Benevolence Fund needs, they helped by sending our last *Fern Lodge Focus* to everyone on their mailing list. We received several requests for Fern Lodge literature as a result of the Arden Wood mailing. We welcome those of you who are new to us, and thank you for your interest and your contributions.

Our drive to raise funds to complete the addition to Fern Lodge and build up our Benevolence Endowment Fund is well under way. We have established our spiritual foundation in thought, and we are going forward knowing that God always provides every quality and component needed for the manifestation of His care for man. There is already outward evidence of the growth in thought we are experiencing. The number of contributors to Fern Lodge has nearly doubled during the months of December and January. The newly formed Development Committee is working diligently, and already we have received a modest increase in donations. Future issues of the *Focus* will update progress toward our financial goals.

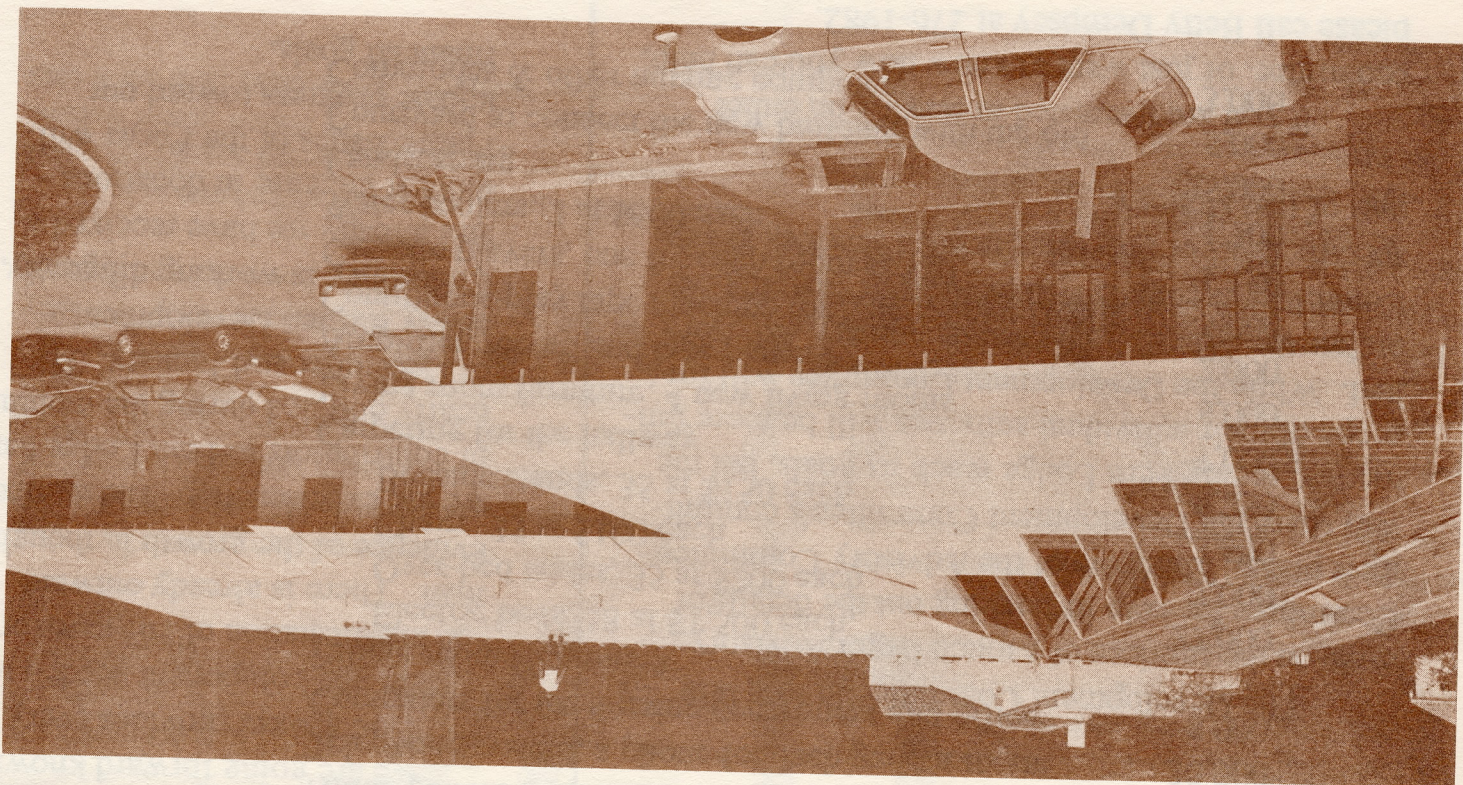
Building Progress

We are happy to report that this winter's rains have greened the hills around Fern Lodge, but have had little effect on our construction. The accompanying photograph shows the progress of our expansion project as of January 26th. As you can see, the framing is complete and the roof is being put on. Soon the building will be weatherproof, and then work can proceed without hesitation, rain or shine.

Working closely with our contractor, Bergesen Construction Co. of Alamo, we have been able to implement some improvements to our plan and still keep the cost of building very close to the original estimate. Most recently we have been selecting telephone, nurse call, intercom and paging systems in order to provide the best communication possible. We are now looking toward decorating and furnishing the building after its completion, and then landscaping the grounds.

We mentioned in our last issue of the *Focus* that we will need donations from the field to complete, furnish and landscape the addition. To clearly identify the need, here is a list of planned purchases with their expected costs. This list includes provision for replacing worn or broken furnishings and upgrading communication systems in the existing facility. If you wish to contribute the cost of these items, your gift will be very much appreciated.

Item	Cost
Nurse-patient communication system	\$25,000
Telephone system, a phone for each patient room	20,000
Computers for the nursing department and office	5,000
Patient room furniture	
Electric beds, 18 at \$1,500 each	27,000
Over-bed tables, 35 at \$200 each	7,000
Chairs, 35 at \$100 each	3,500
Bedside stands, 35 at \$150 each	5,250
Carpeting for the hallway	7,000
Living room furniture, 4 new living rooms	8,000
Amplifier, record and tape players	2,000
Continuous-play tape machine for <u>Science and Health</u>	5,000
Cassette players, one for each room at \$50	1,150
Water coolers, 2 at \$600 each	1,200
Landscaping	25,000
Courtyard to connect the new building with the old	5,000
Commodes & other nursing equipment	3,000



Fern Lodge Focus

Fern Lodge Focus
18457 Madison Avenue
Castro Valley, CA 94546-1699

Non-profit Org.
U.S. Postage
Paid
Hayward, Calif.
Permit No. 798

address correction requested