

SPRING 1985

Fern Lodge Annual Meeting



*** Berkeley**

*** Berlin**

Charlotte Madison

*Christian Science Visiting Nurse
from Berlin, Germany*

will speak on the topic

“Why Christian Science Nursing?”

Sunday, June 16 at 2:30 pm

**Second Church of Christ, Scientist
1521 Spruce Street, Berkeley**

child care will be provided

Annual Meeting Speaker

The principal speaker at our Annual Meeting this year will be Mrs. Charlotte Madison, the Christian Science Visiting Nurse in Berlin, Germany. She brings a unique understanding to the world-wide healing mission of Christian Science.

Called to the ministry of Christian Science nursing, Mrs. Madison was trained in Massachusetts, and then nursed for several years in Great Britain and the U.S., serving for a time at Fern Lodge.

England beckoned again, and she moved there to work as a nursing Supervisor. In 1972 Mrs. Madison answered an ad in the Christian Science Monitor for a Visiting Nurse position in Berlin, Germany. The ad did not mention that a knowledge of German was required, so she arrived in Berlin not knowing a word of the language. Her love for mankind and dedication to the universal healing mission of Christian Science nursing helped her communicate, so she and the Visiting Nurse Service have grown together, reaching out with loving care to the people of Berlin.



Charlotte Madison

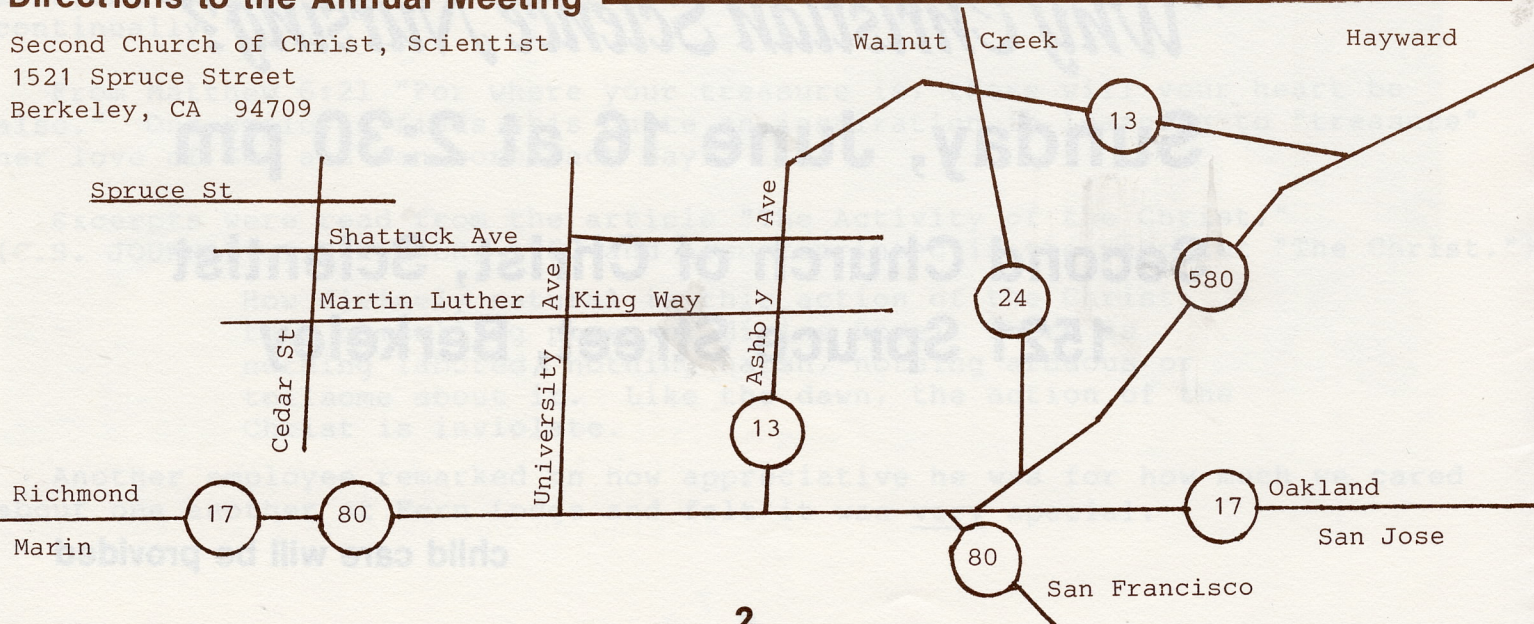
Mrs. Madison will base her talk on Article 8, section 31 from the Church Manual, "Christian Science Nurse," as from her experience she answers the question "Why Christian Science Nursing?"

***** East Bay Visiting Nurse Service Featured *****

This year our Annual Meeting will be extra special. In addition to the Visiting Nurse from Berlin, Germany, we will also hear from Mindee Spear, the new East Bay Visiting Nurse. She will share her always fresh ideas and professional approach to nursing with us. Mindee, a graduate nurse from Walnut Creek, completed her on-job-training at Fern Lodge in 1984, and served on our staff until joining the East Bay Visiting Nurse Service. Information about the activity of the Service will be shared at our Meeting.

Directions to the Annual Meeting

Second Church of Christ, Scientist
1521 Spruce Street
Berkeley, CA 94709



May 1985

The Ministry of Christian Science Nursing

In a message to members of the Concord Church our dear Leader Mary Baker Eddy wrote, "...in speechless prayer, ask God to enable you to reflect God, to become His own image and likeness, even the calm, clear, radiant reflection of Christ's glory, healing the sick, bringing the sinner to repentance, and raising the spiritually dead in trespasses and sin to life in God." (Miscellany 150:18-23) This is the prayer which gently but firmly guides many Christian Scientists to the Church Manual activity of Christian Science nursing. And this same prayer inspires many dedicated Christian Science nurses who joyously serve the healing mission of Christian Science.

Prayerful thought precedes the labor of love which is nursing. A Christian Science nurse comes to his or her duties to support healing, not to work at a job. To be effective, a nurse must be prepared to reflect God by actively acknowledging that Christian Science heals and by encouraging the patient's radical reliance on divine Principle to establish harmony.

How does a Christian Scientist prepare for nursing work? The first requisite for Mother Church members is an understanding of how Christian Science heals and a desire to use this understanding. The best nurses are those whose goal is to practice Christian Science to the fullest, demonstrating Christ's healing presence in every aspect of their lives.

Of course it is important to learn established techniques of caring for people with different nursing needs. But good nurses know that the mechanics of nursing do not heal, while the spirit of Truth and Love which motivates them will always support and encourage healing prayer. We learn techniques well in order to drop attention from them and focus fully on the qualities of thought which heal.

Christian Science nursing is demanding. It requires diligent prayer and watchfulness for a nurse to continually acknowledge God's ever-present power to save mankind. But isn't this just the attitude every dedicated Christian Scientist strives to maintain each day? Isn't this what Paul meant when he said we must "pray without ceasing?" And we should remember that nurses are constantly supported in their work. The prayers of fellow-workers, patients and practitioners all acknowledge that their nursing work is fruitful, and the honest toil for a righteous cause refreshes rather than fatigues, because it spiritualizes thought. Mrs. Eddy reminds us that "The highest and sweetest rest...is in holy work." (Science and Health 519:32)

So what do you think? Are you ready to develop your God-given nursing qualities? The tender care expressed by nurses is needed in every facet of human experience--in our homes and families, our churches and businesses, as well as in the sick room. Christian Science nursing needs thinkers who are ready to work, and the world needs Christian Scientists who are willing to nurse. Will you answer the call to this healing ministry?

If you are interested in any aspect of Christian Science nursing, please write or call Fern Lodge. We look forward to hearing from you and are ready to help.

Fern Lodge, Inc.

18457 Madison Avenue, Castro Valley, Ca. 94546-1699 415 886-2448

May 1985

Dear Friends,

Our dear Leader, Mary Baker Eddy, tells us in SCIENCE AND HEALTH WITH KEY TO THE SCRIPTURES: "Acquaintance with the Science of being enables us to commune more largely with the divine Mind, to foresee and foretell events which concern the universal welfare, to be divinely inspired,--yea, to reach the range of fetterless Mind."(p.84) This impelling statement prompts the realization that as Christian Scientists, we all have an opportunity to serve on a universal healing team. At Fern Lodge we are daily striving to better acquaint ourselves with the Science of being and looking for its demonstration in all our activities.

One of these activities includes steady progress in our new building plans. Escrow on our purchase of land next to Fern Lodge will close soon. Our architect, Peter Harmon, has completed initial drawings for a new addition (see page 5), and we have selected a contractor. Construction will begin around the first of June and should be completed early in 1986.

Progress in these building plans, however, underscores a pressing need at Fern Lodge: Christian Science nurses and nurses aides are urgently needed to meet both immediate staffing requirements and those anticipated when the addition is completed. The Board has formed a nurses recruitment committee to spearhead efforts to meet this need, and we are working to cherish Christian Science nursing more fully. May each of us appreciate our faithful Leader's Church Manual By-law (page 49), CHRISTIAN SCIENCE NURSE and exemplify the qualities she gives us to express, "The nurse should be cheerful, orderly, punctual, patient, full of faith,--receptive to Truth and Love."(S&H p. 395) Please read the article on page 3 to learn more about the goals and motives of the nursing ministry.

Volunteers play an indispensable role in supporting the healing atmosphere at Fern Lodge. Inspired by the words from Hymn 105--

Help us to help each other, Lord,
Each other's cross to bear;
Let each his friendly aid afford,
And feel his brother's care.--

Volunteers read the Bible Lesson to patients, help with arts and crafts, join in hymn sings, and share the Monitor. We always have need for more volunteers, and you are welcome to come, even on an irregular basis. Our Activities Director, Elizabeth Stapler, has recently stepped up efforts both to recruit more volunteer workers and to help patients learn to help themselves and each other more. Our most recent Volunteers Workshop, held February 9th, was attended by 25 people who learned how they could share their talents with the patients at Fern Lodge. Our next Volunteers Workshop is scheduled for this summer. Will you plan on joining us for an informative and enjoyable day?

Our hearts overflow with gratitude for all the support given to Fern Lodge by our contributors. Your gifts make our continued growth assured, and more important, your metaphysical donations demonstrate the abundance of God's love and care for Christian healing. There is always an ample supply of His qualities to ensure our progress in every detail of our dedication to Christian Science nursing.

Sincerely,

Ray H. Bishop

Ray Bishop
President

YOU MAY NEED TO KNOW that your contribution is tax-deductible because we are a non-profit tax-exempt nursing facility under both Federal and State law. Your entire gift is utilized for improvement and operation of Fern Lodge, and no portion of your contribution has been or will be used for fund-raising expenses.

A Non-Profit Nursing Facility for Christian Scientists Accredited by The First Church of Christ, Scientist, Boston, Massachusetts.

President, Ray Bishop, Walnut Creek; Vice President, Jane Schweitzer, Oakland; Secretary, Demarest Morrow, Danville; Treasurer, Wilbur Wood, Oakland; Directors: Charles Arden, Walnut Creek; Eugene DeBolt, Danville; Sylvia Feldman, Castro Valley; Frances Griffeth, Walnut Creek; Alan Jones, Oakland; Blair Lindsay, Oakland; Judy Prono, Livermore; Don Rogers, Berkeley; Ed Spencer, San Mateo; Greg Walsh, Fremont; Joan Winburn, Fremont. Administrator, George Strong, Castro Valley.

Fern Lodge Benevolence Endowment

Fern Lodge is pleased to announce the opening of an Endowment Fund to provide benevolence for patients who would otherwise be unable to stay at Fern Lodge. For many years we have desired to give this type of aid to those whose financial condition does not permit them to pay full price for Fern Lodge's services. Our new Endowment Fund is the beginning of an orderly benevolence program.

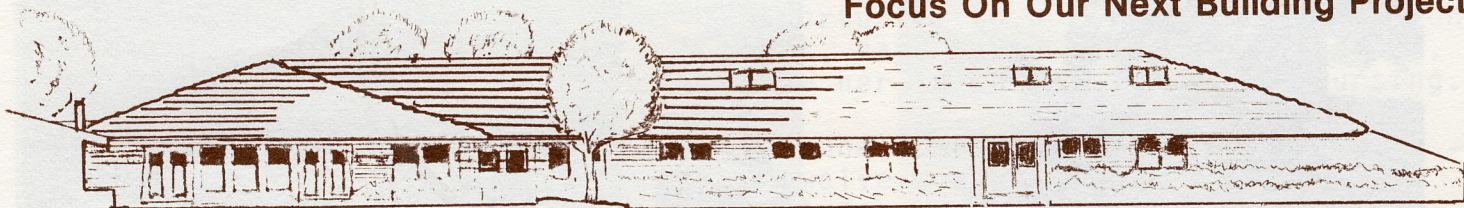
Over the next several years we will be striving to build the Endowment Fund so that it is self-sustaining and able to provide necessary benevolence. The principal of the Fund will be conservatively invested by the Fern Lodge Board of Directors, and interest earned will be used only for re-investment in the principal, or to help our patients pay the costs of the professional nursing care they receive.

A great many of our guests--usually over 60%--receive MediCal welfare assistance to help pay for their stay at Fern Lodge. This government program helps, but it provides less than two-thirds of the total cost of the care given. It is our hope that the Endowment Fund will help make up this difference.

Fern Lodge believes that no sincere student of Christian Science should be deprived of nursing care for financial reasons. To help ensure this does not happen, we ask your aid in building Fern Lodge's Endowment Fund for Benevolence. We need your generous donations now and in the future to put and keep the Fund on firm financial footing.

If you would like to be a part of our endeavor to provide benevolence, earmark your donation for the Fern Lodge Endowment Fund for Benevolence. The Board, staff and guests at Fern Lodge thank you.

Focus On Our Next Building Project



The architect's drawing above shows the proposed addition to Fern Lodge. The new facility will increase our capacity to provide nursing care for Christian Scientists, and we hope to eliminate the need for those who require care to wait for admission.

Connected to the north end of Hillside House, the addition will provide smaller living rooms with 2 or 3 patient rooms opening off them. Fern Lodge strives to keep its friendly, home-like atmosphere, and this plan will allow us to grow without seeming too big. Please come to our Annual Meeting, June 16th at Second Church of Christ, Scientist, Berkeley to see the floor plan.

This project is already underway, and we plan to break ground in July. Thanks to the generosity of Laurel Haven Sanatorium and our many contributors, we have established a Building Fund. We estimate that in an additional \$250,000 in contributions will be required to fully fund the project. We are confident and grateful that Christian Scientists will provide for completion of construction. Special thanks to our sister facility, Arden Wood, for the article about Fern Lodge in their last newsletter. We're glad to be working together to reach out with the loving care of Christian Science nursing.



Joy keeps the ball rolling on Games 'n Kids Day

Scenes Around the Lodge



Farewell to Frosty, the Christmas piñata



Danny Mendoza sets out tomatoes



Many loving hands make work light.

Two Aides Begin Nursing

"In SCIENCE AND HEALTH it states: 'Love inspires, illumines, designates, and leads the way.,' only in my case Love not only led but firmly pushed." Gretelle Martin worked in the Election Division of Stanislaus County for almost 25 years and felt "that my reason for being there was completed. However, I did not see how I was going to be able to change positions. Then I was given the opportunity to take nurses aide class at Fern Lodge while still continuing my employment. I was surprised when I felt it was definitely time."

Now she is anticipating beginning first year nurses training at Arden Wood Benevolent Association in May.

Gretelle has many talents which she freely shares with us. Currently on Sundays and Wednesdays you will often find her assisting church services as our soloist/accompanist. "I feel like I have found a new family with both the patients and staff being so loving and friendly."

Gretelle Martin



June Copeland



"Being in a Christian atmosphere, doing God's work and knowing that 'what blesses one blesses all..'" The unique opportunity to work in such an environment, says Nurse Aide, June Copeland, drew her to Christian Science nursing.

June comes to us after completing a twelve week course as a nurse aide at Arden Wood Benevolent Association in San Francisco.

June learned about nursing from her husband, David, who started his nurse training at Fern Lodge in 1982. She was inspired by the joy David brought home with him from his nursing work, and it wasn't long before she was asking him about how she could become a nurse.

David will be returning to Fern Lodge from Arden Wood Benenvolent Association, where he has been in 2nd year training. Fern Lodge is looking forward to having both June and David working on our nursing staff together.

The Fern Lodge Staff Shares

On March 14th a very special meeting for Fern Lodge staff was held. All employees were invited to come prepared to share individual inspiration which guides their daily work at Fern Lodge. As a theme for the meeting the staff was asked to consider the following passage from Mary Baker Eddy's book THE FIRST CHURCH OF CHRIST, SCIENTIST AND MISCELLANY, p.251:26-3:

You have convened only to convince yourselves of this grand verity: namely, the unity in Christian Science. Cherish steadfastly this fact. Adhere to the teachings of the Bible, Science and Health, and our Manual, and you will obey the law and gospel. Have one God and you will have no devil. Keep yourselves busy with divine Love.

The meeting opened with gratitude given by the Administrator, George Strong, for the good work being done by the employees of Fern Lodge and encouragement for "taking the good we experience each day, magnifying it and working with it."

One employee shared the article, "Improve Your Time," MISCELLANEOUS WRITINGS, p.230.

(Excerpts from article)

Success in life depends upon persistent effort, upon the improvement of moments more than upon any other one thing. A great amount of time is consumed in talking nothing, doing nothing, and indecision as to what one should do. If one would be successful in the future, let him make the most of the present..

The following quotations and remarks were shared by other staff members:

"It is important that each of us bring our highest sense of the spiritual individuality of the patients and staff to each activity we pursue. We need to remember that 'The divine Mind maintains all identities, from a blade of grass to a star,...' (SCIENCE & HEALTH, p.70:12).

"We need to see ourselves as the body of the church (see I Corinthians 12) ..we need each other."

"It is important to value the good in the patients and allow that to bless everyone at Fern Lodge." From Psalms 52:1 "...the goodness of God endureth continually."

From Matthew 6:21 "For where your treasure is, there will your heart be also." One employee finds this quote an inspiration in learning to "treasure" her love of God and man more each day.

Excerpts were read from the article "The Activity of the Christ," (C.S. JOURNAL of DECEMBER, 1957 and also reprinted in the pamphlet "The Christ.")

How divinely natural is this action of the Christ, this compelling power of divine Love! There is nothing labored, nothing harsh, nothing arduous or toilsome about it. Like the dawn, the action of the Christ is inviolate.

Another employee remarked on how appreciative he was for how much we cared about one another at Fern Lodge and felt it was very special.