

FERN LODGE, Inc.

A Non-Profit Nursing Home for Christian Scientists
Accredited by the Department of Care of
The Mother Church

18457 Madison Avenue, Castro Valley, California 94546 • (415) 886-2448

THANKSGIVING 1974

Dear Fern Friend:

We report with gratitude in this third Thanksgiving message that progress is continuing at Fern Lodge. In fact, your generous response to last year's request for funds to upgrade our premises and services has enabled us to operate more efficiently and with more comfort to our patients. (Please see news story for details on the improvements.)

There are all too few beds available in Northern California for Christian Scientists who, having outlived their cash reserves, need Medi-Cal funds so our waiting list gets longer and longer. Continued benevolence is necessary from the field to allow us to maintain as many beds as we do for these State welfare recipients. Three-fourths of our present patients are in this category for whom we receive twenty-two percent less than our regular patient rate.

This letter of thanks and its extra pages of news represents in its totality the Fern Lodge "idea". We are pleased with all our progress but constantly ask, are we loving enough, Christian enough, scientific enough? Is our thought open, working, growing? It is the spiritualization of thought that moves forward a collective activity such as ours and will show us what should be our present moves and long range views.

A neighborhood zoning and traffic proposal is being considered by the County Planning Commission which when agreed upon will allow us to apply for permits for additional building and improvements on our existing property. Our plans are already formulated for this building program and we can proceed as permits are obtained and donations received from our friends.

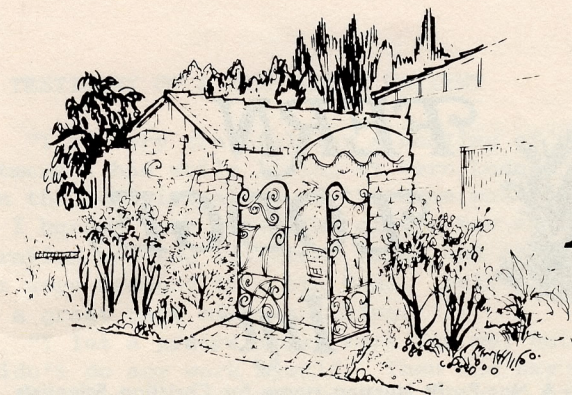
Recently we all received a letter from The Mother Church making known their special need. After you have given what you feel you can to The Mother Church, we hope you will continue to give to Fern Lodge.

Sincerely and gratefully,

THE BOARD OF DIRECTORS
FERN LODGE, INC.

OFFICERS & DIRECTORS

President: Herbert H. Mitchell, Berkeley; Vice President: Elizabeth S. Dempsey, Castro Valley; Secretary: Hazel Wilson, Hayward; Treasurer: Carrie E. Donaldson, Castro Valley; Directors: E. Alfaretta Ballou, Oakland; Arthur W. Brandenburg, Hayward; Bernice Bryan Brown, Berkeley; Eugene F. DeBolt, Danville; Arliss B. Harmon, Hayward; Marion D. Nawman, Piedmont; Robert L. Nawman, Alamo; Robert A. Young, Hayward; Director Emeritus: Henry G. Curran, San Mateo.



FERN FRIEND NEWSLETTER

Fern Lodge, Inc. — A Nursing Home for Christian Scientists
Accredited by the Department Of Care of The Mother Church

(415) 886-2448

WHAT THE DONORS DID FOR FERN LODGE LAST YEAR!

Improvement-wise it was an eventful year. We were able not only to repair some major appliances, but to replace very old ones. The blowout of a WATER HEATER became a blessing when it was discovered that we could replace it with two units to bring an abundant flow of hot water to both buildings.

The tired old KITCHEN STOVE was replaced with a larger, more efficient beauty. (\$1,000)

The newly painted yellow dining room now has round white TABLES and CHAIRS and new yellow DISHES to make a cheerful, sunny room.

French provincial CHAIRS, END TABLES, and a new COUCH in orange, gold, and green colors have livened up the living room.

TWO COLOR TELEVISION SETS and a STEREO CASSETTE AND RECORD PLAYER were installed early in the year. These latter are connected to the intercom system so that music before the reading of the lesson-sermon and the weekly church services may be heard in all the rooms. The radio series and lectures can also be broadcast. A TV along with The Christian Science Monitor is a "window on the world" to patients.

To help accommodate the twenty students here during the Spring Adventure, a CLASS ROOM was built into a corner of a third building on the property. It doubles as a BOARD MEETING ROOM and an occasional overnight quarters for a nurse.

In time for the spring and summer outdoor weather, new PATIO FURNITURE arrived: white wrought iron tables and chairs with a large umbrella and other occasional chairs and a settee.

All of this was possible only through the loving and caring support of you in the field. All of Fern Lodge, residents, staff, volunteers and Board are most thankful.

PRACTITIONERS FUND APPRECIATED

Here are excerpts from a letter received from a practitioner who comes to the Lodge every week:

"As a beneficiary of the Gratitude Practitioners Fund, I want to thank you for the recent check and for those that have previously come my way.

"Most practitioners, I am sure, have a certain share of 'unpaid' cases, but the compensation appears anyway. The most important part, of course, is not monetary. Rather it is in finding response to the healing Truth, and evidence of real progress.

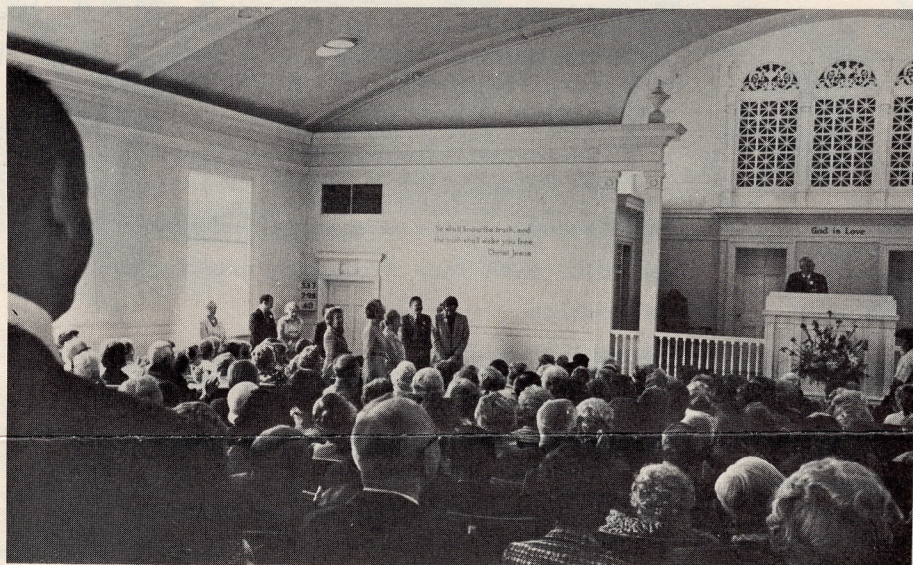
"The field needs to know how much we need Fern Lodge, and how important it is to the guests and to their families who have placed them there. The good work must go on. Thank you."

Each guest admitted to Fern Lodge is required to have a Journal-listed practitioner actively involved in the healing work. If the guest is supported through Medi-Cal funds, there is usually very little reimbursement to the practitioner, though the loving work continues sometimes night and day.

In recognition of their loving unpaid service, we have been dispensing monthly to five or six of our busiest practitioners from a Practitioners Fund set up a year and a half ago. \$695 has already been received from the field for this Fund and has been distributed with appreciation.

Anyone who wishes may continue to send donations to: Practitioners Fund, c/o Fern Lodge.

MR. INMAN DOUGLASS GUEST SPEAKER AT FERN LODGE ANNUAL MEETING



Mr. Inman H. Douglass, C.S.B. spoke to a full auditorium as guest speaker at our Annual Meeting held in First Church, Hayward on a Sunday afternoon last May.

"Who Cares?" was the title of his talk.

We are grateful to share excerpts of his address with the field.

"WHO CARES?"

"Why do we want to use this word 'care'? That's a relative, human term. Yes it is but when you stop to consider the many times Mrs. Eddy uses the word care in her writings, the many times it appears in the Bible, it's pretty obvious that we haven't grown beyond the stage where we're not supposed to care anymore.

"Now, if we think that we've reached the point where the use of the word humanity is not good, we'd better stop and reflect a bit.

"Take the 'Scientific Translation of Mortal Mind' with which you're all familiar, beginning on page 115 of Science and Health. There are three degrees. Now I ask you, where does care fit into these three degrees? Where do you find care beginning to appear and how do you trace it to its highest and best sense? Well obviously, there is no care in the First Degree. That's where you find carelessness, total lack of care. No one is interested. And you find a positive, constructive, healing sense of care beginning to appear in the Second Degree. Of course, in the Third Degree of Understanding, the absolute sense of things, there obviously is no need for nursing facilities. I don't think you'll find any need for practitioners there either. There's no need for healing there. There's no need for anything less than absolute perfection. We won't be training nurses in the kingdom of heaven. We won't be building nursing facilities in the kingdom of heaven. So what's the justification for nursing care, for the training of nurses, for the providing of the facilities you have at Fern Lodge?

The same justification as was voiced in the story of the Good Samaritan, 'Go and take care of him.' That's what we're doing. Let's 'go and take care of him'.

"We are not ready to eliminate the human from our lives. We cannot afford to take an abstract stand for total spirituality.

"I think it is beautiful in that parable of the Good Samaritan that the Master prescribed both the kind and the amount of love required to inherit eternal life. 'Thou shalt love the Lord thy God with all thy heart, and with all thy soul, and with all thy strength, and with all thy mind; and thy neighbor as thyself'. Now no one today totally meets this requirement. We do it only in part. We do it to the best of our ability. We do it according to the degree of our understanding. Who knows all there is to know of God? Who loves God with all his heart, with all his mind, his strength, his soul? Sure, we try. A lot of us make a good demonstration of it but I can't say that I love God in demonstration, in practice, completely, totally, because I still humanly think I'm part mortal. And until I overcome that completely in demonstration I only understand God in part. That does not mean that God is not knowable, not understandable totally, but we're in the process of increasing the amount, the extent, to which we understand God. And as long as we understand God in part we will need nursing facilities, along with a few other things.

"Mrs. Eddy says, 'Each successive period

"WHO CARES?" Cont'd.

of progress is a period more humane and spiritual'. (Misc. p. 26) Isn't that an interesting use of the word humane our Leader gives us here? Mrs. Eddy was certainly a humane Christian Scientist.

"There's an interesting difference, I think, between the Christian Science meaning of humane and the medical meaning of humane. It might be described as the difference between humanity imbued with the reality of matter, such as the medical theories, and humanity imbued with the reality of Spirit. That's the difference between the Christian Science concept of humane and the medical sense of humane.

"So the success of our work is measured by our answer to the question, 'How much do we care? And how do we care? That is, what is the quality of our care? The right answer to this question comes only in terms of spiritual affection humanly expressed. This spiritual affection must be translated into

the highest forms of spiritual and practical service. It must be focused into a constant blending in multitudinous ways daily of the practical with the spiritual.

"Why do we provide proper care and attention for those not quickly healed in Christian Science? Because we love them. We want to care for them in the highest and best way which includes the practical way. We must measure our care for our brother both in quality and quantity by God's care for man, by Love's care for its ideas. We must measure how much we should care by how much God does care. Then how well we care for our sick, humanly, will be determined by how much we care for him spiritually. Love restores to human consciousness all that is good and true. The Psalmist sang of God, 'He restoreth my soul.'

"Christian Science nursing facilities are the most unique care centers any where. They are founded upon Love's ability and purpose to care for its own, restoring to human consciousness the evidence of harmony and dominion.

"You know, the term 'nurse' has a lovely connotation. It stems from the Latin 'nutritia' which means 'nourishes'. It implies close care and attention. It fosters, cherishes, cultivates growth, maturity. It holds dear, prizes, and preserves, never broods over, that which is of real value or worth.

"So, ideally, the Christian Science nurse fulfills this concept in the highest degree. You nurse to maturity the patient's swaddling concept of health and peace."



After the business meeting and address, an invitation was given to visit Fern Lodge, a ten minute ride away. Eighty took advantage of the invitation, toured our buildings, asked questions of our friendly guides, and had lemonade and cookies on our patio.



OUR THIRD "INTRODUCTION TO CHRISTIAN SCIENCE NURSING" ATTRACTS TWENTY ADVENTURERS

Because nurses are still very much needed throughout the field, we again allotted funds to hold our third "Spring Adventure — an Introduction to Christian Science Nursing".

Held last April during 3 days of spring school vacation, it attracted 20 men and women, young and not so young — a stimulating group who, as before, enjoyed one another as well as the classes in Christian Science ethics and in some of the practical skills needed in a sick room, as taught by Mrs. Emily M. Valentine, a C.S.B.A. nurse and also our Administrator.

A bus trip, dinner and tour at the Benevolent Association in San Francisco and Valentine Haven in San Mateo climaxed the first day.

A visit and talk by Miss Marion Davies, Mother



Church Care Department Co-ordinator of Nurses Training, and a pot-luck supper in the patio and living room hosted by the Fern Lodge Board of Directors were added events of the second day.

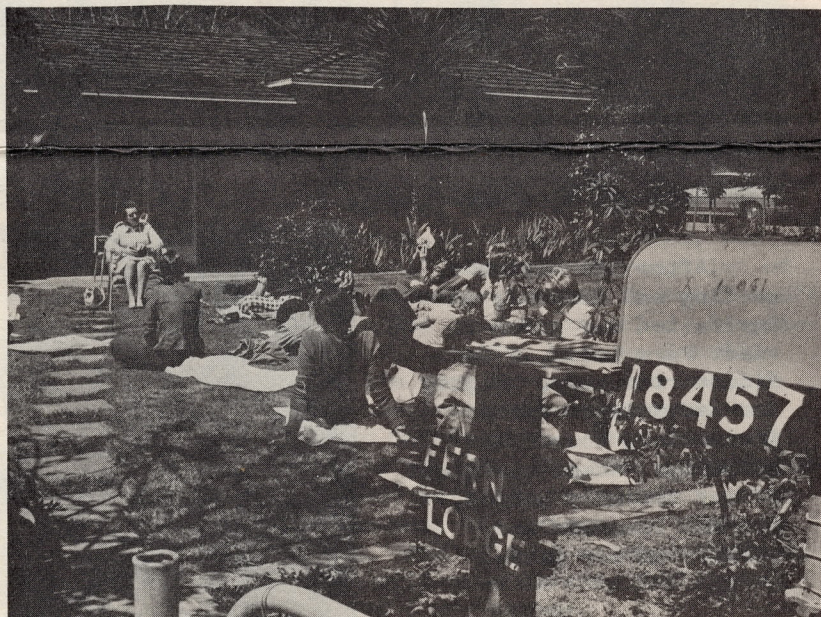
Six students stayed on for the third day to observe and assist on the floor during a regular nurse's shift beginning at 6:30 a.m. This day included a patio picnic with happy patients and volunteers hostessing the Spring Adventurers.

Again this year members of the local Christian Science churches generously welcomed the out of town students into their homes for several nights or helped prepare food which they brought in during the class days.

TWO FLEW TO ADMINISTRATORS SEMINAR IN BOSTON

Because of his keen interest in Administration and our satisfaction with his work, the Fern Lodge Board arranged for Robert McVey, our able Administrator's assistant, to accompany Mrs. Valentine to the Care Department's Administrators Seminar in Boston this September.

Bob is at present taking the first of three correspondence courses in Nursing Home Administration as recommended by the Department of Care and given by George Washington University. He has received only A's and A+'s in his lessons so far and we are very proud of him.



MISS DAVIES TALKS TO CLASS ON FRONT LAWN AT LODGE

TESTIMONY OF A FERN LODGE PATIENT

"I am very grateful for a healing of resentment I had while living at Fern Lodge. When the Administration of the Home was changed, I became very resentful of the new administration and the different rules and changes that were brought into the Home. Self-pity was a great part of my thinking.

"I let a practitioner work for me, but I didn't do any work myself. Then one day the practitioner gave me the Swedish Herald (Jan. to Mar. 1974). While reading the first article, 'What Does It' by L. Ivimy Gwalter, I knew I had found my answer. The article told me that I needed to love everything and every body, and how to practice this love.

"My whole attitude and outlook on life changed. I'm more willing to help others and do help them. Since then 'showers of blessings' have been coming. I have been able to serve as Reader for the Daily Lesson-Sermon for the Lodge from time to time.

"My Dad, who doesn't study Science, was so happy that he gave me a speech on how much he thought I had improved.

"I am very grateful for the change and plan to keep going forward."

Vicki Kruger

FOOD FOR THOUGHT (AND STOMACH)

Only too aware that "institutional cooking" can become tiresome, Fern Lodge's cooks and volunteers have initiated a home-made-specialties program.

These are some of the tasty treats that are now being enjoyed by our patients:

- homemade coffee cake for Sunday mornings
- apple pies made from home grown apples
- cookies
- apricot bread
- jams and jellies
- applesauce and apple butter made by one volunteer from another volunteer's tree
- grapes brought from the vineyard by the parents of a guest
- yummy homemade and decorated birthday cakes

Fern Friends, we hope this encourages you to bring cookies, breads, pies and even casseroles, or recipes — enough for 30 small portions. Our residents are small eaters, but do like a change and the taste that only homemade can give.

A SUMMER VACATION SHARED

All summer long, Fern Friend Hilda Steele, school teacher, brought beads, safety pins, art foam, wire and rick-rack to the weekly craft sessions at Fern Lodge.

With these she taught the residents to make clever necklaces, bracelets, pendants and Ming trees.

Because we are a non-profit organization, Mrs. Steele was able to get some of the materials free or at reduced prices and in ample amounts to use also for the children in her 2nd and 3rd grade classes during the school year.



SOME BUSY VOLUNTEERS GETTING OUT OUR THANKSGIVING LETTER

CO-ORDINATOR OF VOLUNTEERS

Fern Lodge has a real need for a Co-ordinator of Volunteers. Is this something you would enjoy? We now feel we can offer a minimal salary. Please call the Lodge at (415) 886-2448.

ANYONE FOR A JOY RIDE?

One of the most frequent requests we receive from our guests is for a 30 or 40 minute ride around in a volunteer's car. (4-door cars are preferable as they are easier to manage and several can go at a time.)

If this sounds like your way of sharing phone us with a date convenient for you and we'll have several eager guests ready to go.